

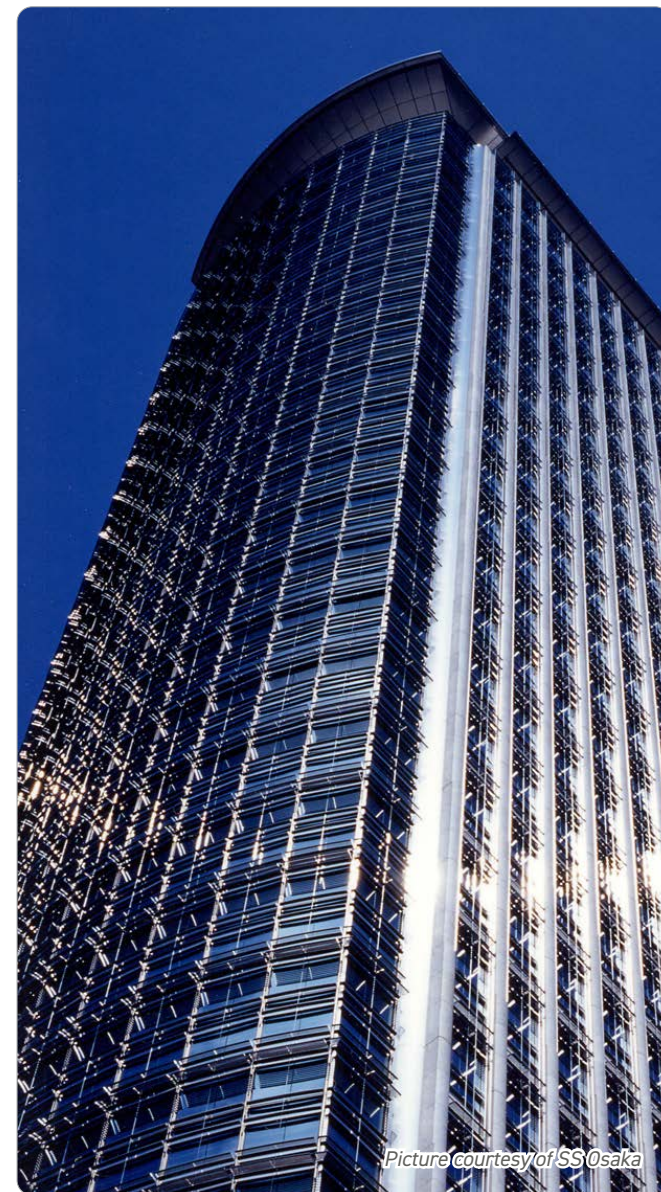
## Nakanoshima Mitsui Building

### Osaka, Japan

Nakanoshima Mitsui Building is the hub of the Mitsui group in Kansai area. While designing the Mitsui Shinkan plan, the architect was also doing the same for a building in Muromachi, Tokyo. A relationship between these two buildings separated by great distance and the synchrony that comes from their relationship was sought. Nakanoshima is especially blessed with water and greenery among all the locations of Osaka, 'the city of water'. During the Edo era, lots of Daimyo's had their storehouses there as the river received a high amount of traffic bringing the wealth to the town. Now, the water flow gives people peace as a wealthy urban environment and the flow of lively people on the street brings a human touch to the space. Utilizing the rare urban environment that has good conditions and developing more appeal are important. The architects accentuated the long standing cultural identities of the north and south by actualizing the main thoroughfare that connects the 'North', a town of new business, with the 'South', an area that has been the centre of commerce and culture since a long time ago. There are plans for the west side of the property to have a super high-rise building built, so a strong stone wall with small windows was constructed rhythmically. The east side of this building has a 14-storey office building close by, so large pillars were incorporated into the design to

block the view with each other. On the entire wall surface, lots of stainless steel parts such as louver sunshade, curtain wall, rail cover, pipe, rod and more, are contrasted with white granite and designed lengthwise and breadth, creating a light image. HL glossy finish contrasting with white granite with fine light reflection of stainless steel gives an advanced impression. Meanwhile, thanks to the concept of lightness and aesthetics, a see-through freshwater entrance eaves and the mullion of stainless steel structural materials and tempered glass catches visitor's eye. It is a work that raised the image of stainless steel building materials contributing to harmony with long life, appearance, and environment, which is required for skyscrapers.

Environment:	urban
Use:	curtain wall, mullion, pipe façade
Material:	304 with a hairline polish
Manufacturers:	Aichi Steel Nisshin Steel
Architects:	Jun Mitsui & Associates Inc. Architects (Pelli Clarke Pelli Architects)
Photographs:	SS Osaka
More information:	jma.co.jp



Picture courtesy of SS Osaka



Picture courtesy of SS Osaka